

DMX Panel

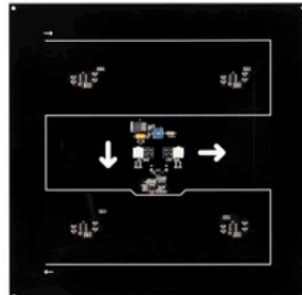
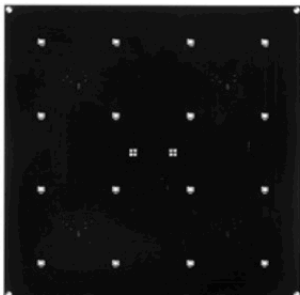


DMX Panel

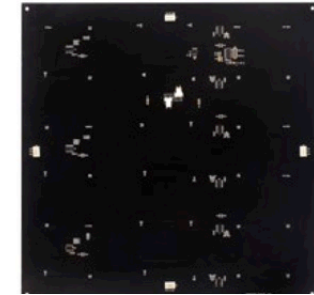
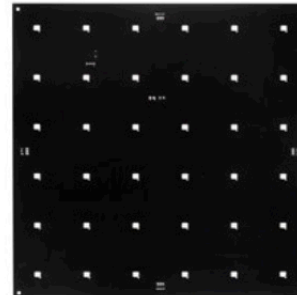
FEATURES

- DMX RGB panel is designed to install on the wall or ceiling of club, stage, events and so on.
- High-brightness SMD RGB 5050 leds are used on this panel.
- Apply solid capacitor on PCB for long lifetime.
- Save 40% power with more efficient power management design.
- Wide working voltage range DC12-24V, user only needs to feed power at beginning of each universe.
- Standard DMX512 control protocol (Max 44frames/second).
- DMX addresses can be set automatically and memorized also.
- The communication between panels are synchronized perfectly under support of Artnet Controller.
- Protection: Short Circirt, over current, over temperature.

DP25016 - DP30016
DMX PANEL 16 PCS

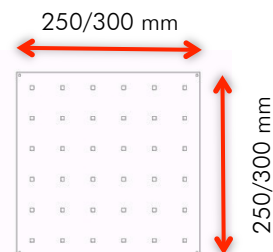


DP25036 - DP30036
DMX PANEL 36 PCS



SPECIFICATIONS

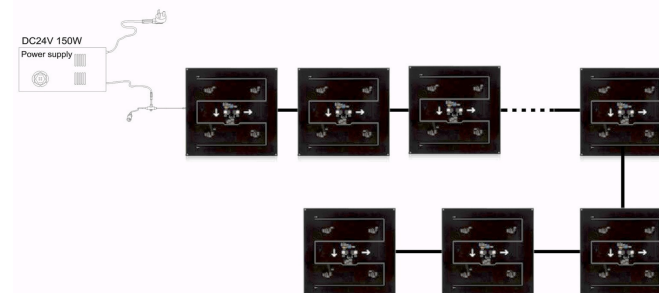
	DP25036	DP30036
Size	250x250 mm	300x300 mm
Color	RGB/RGBW	RGB/RGBW
PCB color	Black/ White	Black/ White
Led	SDM RGB 5050	SDM RGB 5050
Led Q.ty	36PCS	36PCS
View angle	120°	120°
Voltage	24V DC	24V DC
Power	8,5W	8,5W
Control	DMX 512	DMX 512
Address Setting	Auto/Manual	Auto/Manual
Pixel	1 / 4 / 36 pixels	1 / 4 / 36 pixels
Universe	4 panel/universe	4 panel/universe
Operating Temperature	-20° to 50°C	-20° to 50°C
Storage Temperature	-40° to 80°C	-40° to 80°C
IP	IP65	IP65
Certificate	CE/ROHS	CE/ROHS



ACCESSORIES



CONNECTION



DP25036 DMX PANEL

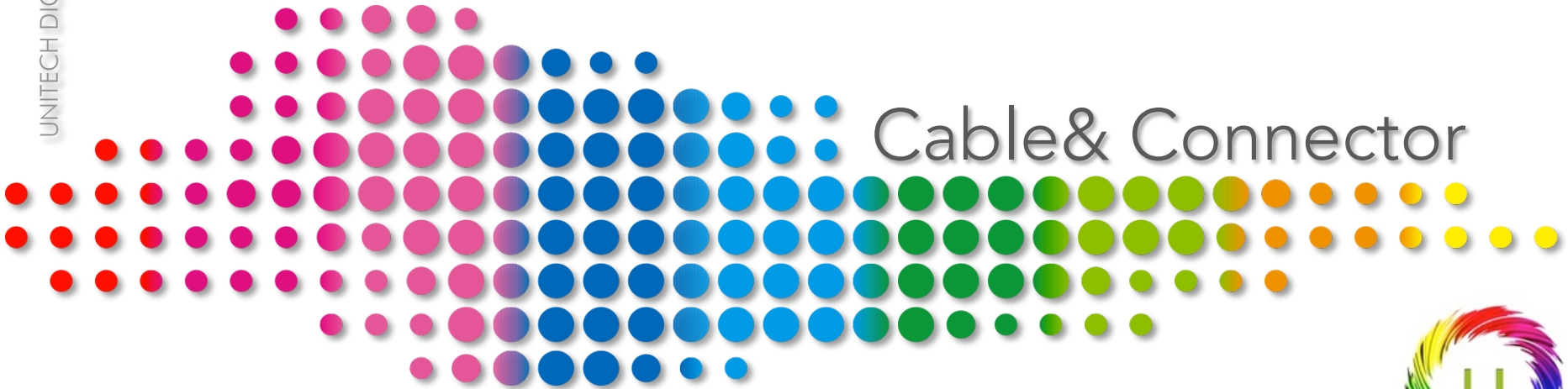
SIZE: 9.84"x9.84" (250x250mm)

ORDER CODE: UNISL3DP2536

DP30036 DMX PANEL

SIZE: 11.81"x11.81" (300x300mm)

ORDER CODE: UNISL3DP3036



Cable & Connector



UNITECH
DIGITAL MEDIA

Cable & Connector

IP67 CONNECTOR PUSH LOCK



4PIN Extension Cable 67E4M4F
ORDER CODE: UNICPL67EM4F



T Connector for Signal&Power 67T5XM4F2M
ORDER CODE: UNICPL67T5XM4F2M



T Connector for Power 67T4M4F2M
ORDER CODE: UNICPL67T4M4F2M



2PIN Power Cable 67E2FB
ORDER CODE: UNICPL67E2FB

IP67 CONNECTOR SCREW LOCK



2PIN Power Cable 67E2FB
ORDER CODE: UNICSL67E2FB



T Connector for Signal&Power 67T5XM4F2M
ORDER CODE: UNICSL67T5XM4F2M



T Connector for Power 67T4M4F2M
ORDER CODE: UNICSL67T4M4F2M

IP65 CONNECTOR SCREW LOCK



2PIN Power Cable 65E2FB
ORDER CODE: UNICSL65E2FB



T Connector for Signal&Power 65T5XM4F2M
ORDER CODE: UNICSL65T5XM4F2M



T Connector for Power 65T4M4F2M
ORDER CODE: UNICSL65T4M4F2M



T Connector for LED Fixture 65T4M4F4F
ORDER CODE: UNICSL65T4M4F4F

NO WATERPROOF CONNECTOR



5PIN XLR Female – CD – XLR5F
ORDER CODE: UNINWCXLR5F



5PIN XLR Male – CD – XLR5M
ORDER CODE: UNINWCXLR5M



3PIN XLR Female – CD – XLR3F
ORDER CODE: UNINWCXLR3F



3PIN XLR Male – CD – XLR3M
ORDER CODE: UNIAC67E2FB



T Connector for Signal&Power
NWT5XM4F2M
ORDER CODE: UNINWT5XM4F2M



4PIN Extension Cable NWE4M4F
ORDER CODE: UNINWE4M4F



Signal Cable NWE5XM3SF
ORDER CODE: UNINWE5XM3SF

Power Supply

LRS



LRS Power Supply

ORDER CODE: UNIPSLRS150

Wattage	LRS 150W
Features	Economical non-PFC models Miniature size with complete protections Most economical models with complete safety certificates
DC Voltage	DC12V DC24V

SP



SP Power Supply

ORDER CODE: UNIPSSP150

Wattage	SP 150W
Features	Built-in active PFC function Full range input, complete functions
DC Voltage	DC12V DC24V

HLG



HLG Power Supply

ORDER CODE: UNIPSHLG150

Wattage	HQ 150W
Features	90-305VAC input, built-in active PFC function Metal case, IP67/IP65 design for indoor or outdoor installations
DC Voltage	DC12V DC24V